

Palladio

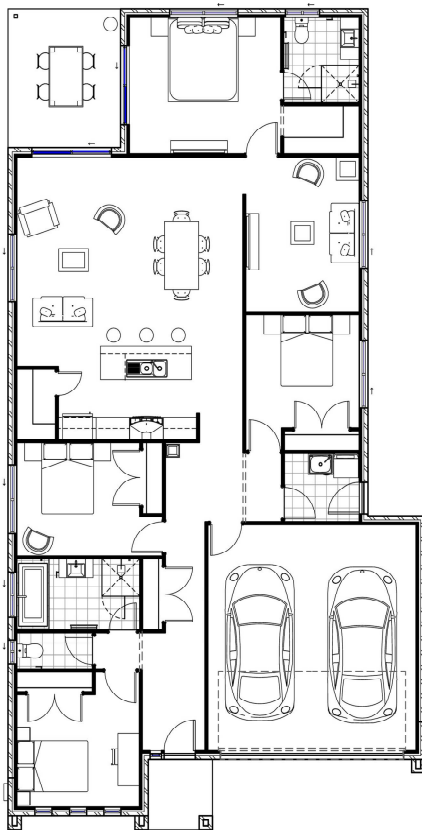
Lot 1104 Butterleaf Crescent



'The Varese MTR' 4 Bedrooms, 2 Bathrooms, Double Garage, Media Room

House & Land Package House Size 207.70m², Land Size 375m²

\$515,000



Turn Key inclusions:

- Fixed price site costs
- 2590mm ceilings throughout
- European 900mm Freestanding Upright Cooker
- European 900mm Rangehood
- Freestanding Dishwasher
- Overhead Kitchen cupboards
- Fridge water
- Butlers Pantry with Feature Glass Door
- Stone benchtops to Kitchen/Ensuite/Bathroom
- Heat/Light/Fan combo to Bathroom/Ensuite
- Daiken reverse cycle split system AC to Living
- Ceiling fans to all bedrooms and Alfresco
- LED downlights throughout.
- Timber Look Laminate flooring to main floor
- Carpet to all bedrooms and Media room
- Concrete & tiling to Alfresco
- Flyscreen's to all windows and doors
- Remote control double garage with internal access
- Window coverings throughout
- Vogue Front Façade with render
- 1200mm Feature Front Entry Door
- Full landscape package including fences / turf to front & rear/ garden beds to front yard / letterbox / clothesline
- Exposed aggregate driveway and porch

Contact Us

Visit our Display Home | 25 Swan Road Pimpama | cclapp@palladio.com.au | www.palladio.com.au

Contact Christiane Clapp 0431 546 326

✓ *Quality Comes Standard*