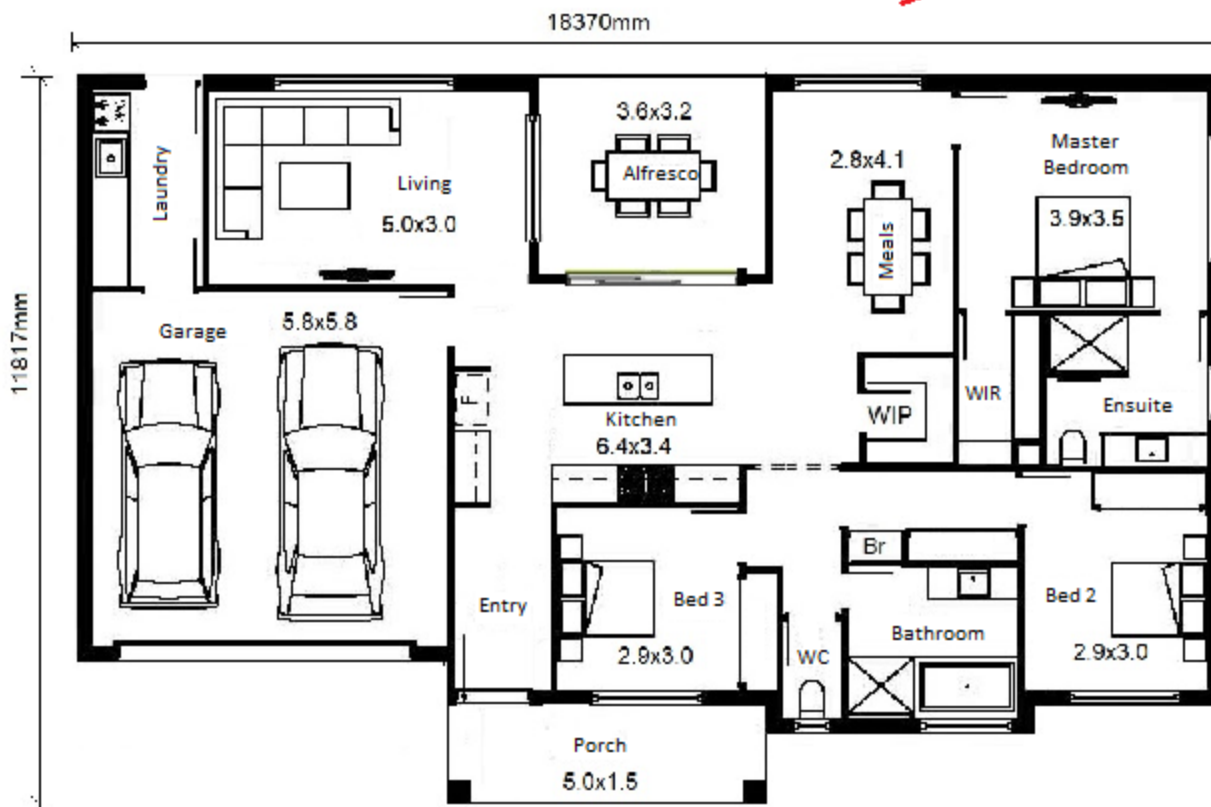


# Palladio

## Lot 23 THE ELEVATE ORMEAU HILLS



**HOUSE & LAND PACKAGE Turn key ~~\$450,456~~ \$430,456**



**LIMITED  
TIME  
ONLY  
OFFER.  
PHONE  
NOW  
0431-546 326**

**Inclusions:**

Council fees, engineering, survey & soil test  
Colorbond roof  
Remote control, double garage with internal access  
3 Bedrooms, 2 Bath, WIP, Living & Alfresco  
Rendered Vogue façade with brick to remaining elevations  
Concrete to Alfresco  
2590mm high ceilings throughout  
Split system Daikin air-conditioning to Living  
Split system Daikin air-conditioning to Master Bedroom  
Ceiling fans to each Bedroom & Alfresco  
\$3,000 to spend on Electrical  
Dishwasher

European 900mm Freestanding Gas Cooker with Electric Oven  
European 900mm Rangehood  
Stone benchtops to Kitchen and Vanities  
Quality carpets to all Bedrooms, Robes & Media  
Quality tiles to all remaining main floors  
Flyscreens to all windows and glass sliding doors  
Block out roller blinds to all windows  
Letterbox, Clothesline & TV aerial  
100m<sup>2</sup> of Turf including top soil  
\$1,000 to spend on plants  
Good neighbour fence including 1 side gate  
Up to 50m<sup>2</sup> Exposed aggregate for driveway and Porch  
\* Subject to soil test & wind rating reports

**Contact: Christiane Clapp on 0431 546 326 or email [cclapp@palladio.com.au](mailto:cclapp@palladio.com.au)**

**Come and visit our displays at 25 Swan Road, Pimpama**

Copyright Palladio Homes Pty Ltd. All rights reserved.