

# Palladio —

COOMERA - ADDRESS  
AVAILABLE ON ENQUIRY.



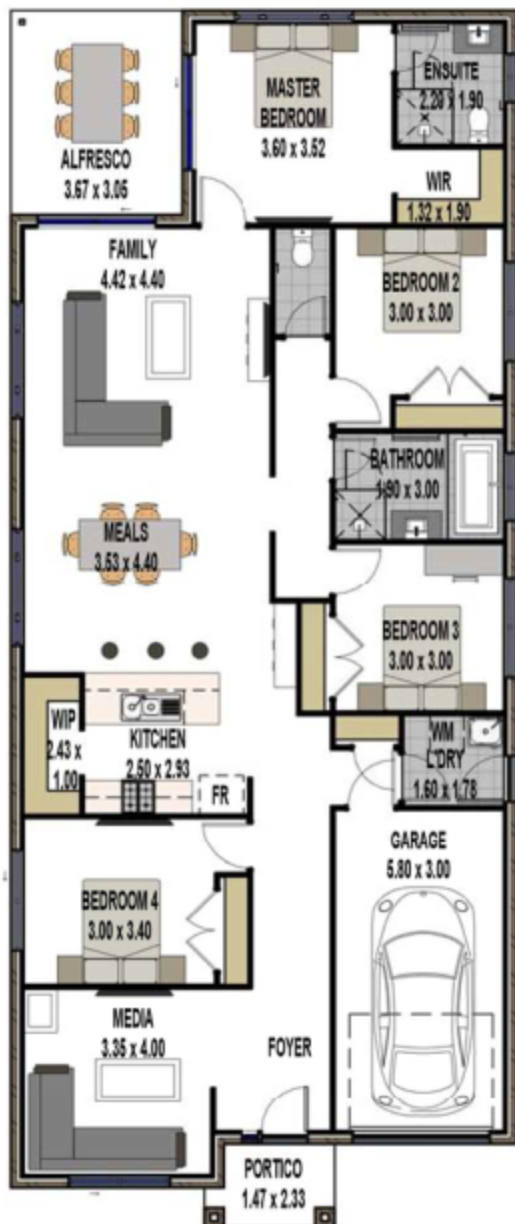
**HOUSE & LAND ~~\$525,000~~ \$505,000**

**THE VISTA 188.86m<sup>2</sup>**

**LIMITED TIME  
OFFER,  
CALL NOW  
0431 546326**

#### Inclusions:

- Council fees, engineering, survey & soil test
- Excavations, concrete to Alfresco
- BAL 29 Bushfire rating
- Colorbond roof
- 2590mm high ceilings throughout
- Remote control, single garage with internal access
- 4 Bedrooms, 2 Bath, Media & Alfresco
- Rendered Vogue façade with brick to remaining elevations
- Split system air-conditioning
- Ceiling fans to all bedrooms
- LED lights and additional double power points
- European 900mm Freestanding Gas Cooker with Electric Oven
- European 900mm Rangehood
- Dishwasher
- Stone benchtops to Kitchen and Vanities
- Quality carpets to all Bedrooms & Media
- Quality tiles to all remaining main floors
- Metal mesh flyscreens to all windows and glass sliding doors
- Block out roller blinds to all windows
- Letterbox, Clothesline & TV aerial
- 190m<sup>2</sup> of Turf including top soil
- \$1,000 to spend on plants for Landscape
- \$7,000 to spend on fencing
- Up to 45m<sup>2</sup> Exposed aggregate driveway and Porch



**Contact: Christiane Clapp on 0431 546 326  
or email [cclapp@palladio.com.au](mailto:cclapp@palladio.com.au)**

**Come and visit our displays at 25 Swan Road, Pimpama**