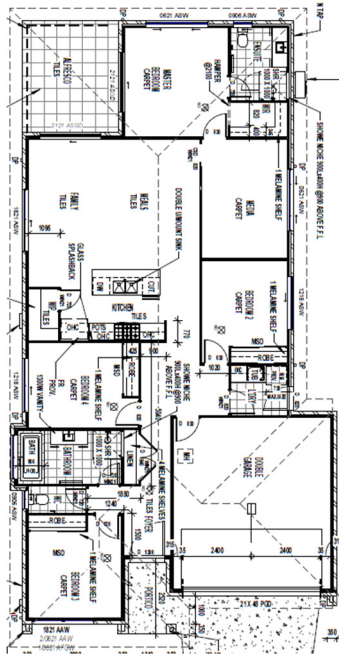


# Palladio Homes The Varese MTR

4 Bedrooms, 2 Bathrooms, Open Plan Kitchen/Dining/Family Room, Media Room & Double Garage

Full Turn Key Spec' Home: Lot 1602 Stirling Circuit, Pimpama **\$550,000.00**



Experience the *Palladio* difference

## At Palladio Homes

✓ Quality Comes Standard

### Inclusions

- \* Land size 499m<sup>2</sup> Corner Block
- \* Fixed price site costs
- \* Remote control double garage door
- \* Vogue façade as illustrated
- \* Fully rendered and painted finish
- \* Colourbond Roof
- \* Exposed aggregate driveway and porch
- \* Fully Fenced & Turfed with Clothesline & Letterbox
- \* European 900mm Freestanding Upright Cooker
- \* European 900mm Rangehood
- \* Freestanding Dishwasher
- \* Overhead Kitchen cupboards
- \* Stone benchtops to Kitchen/Ensuite/Bathroom
- \* Undermount sink to Kitchen
- \* Finger-grips to all cabinets (no handles)
- \* Soft-close to all cabinets
- \* Glass splashback to Kitchen & Laundry
- \* Upgraded plumbing fixtures to Kitchen /Bathroom/Ensuite
- \* Semi-frameless shower screens
- \* Daiken 10 Kw Fully Ducted reverse cycle A/C
- \* Feature Glass & Timber doors to Media/Pantry/Bathroom/WC/Linen
- \* Mirror Sliding doors to BIR's to Bedrooms 2/3/4
- \* Fly screens to all Windows/Glass sliding doors/Laundry door
- \* Block out roller blinds to all windows
- \* Fans to all bedrooms and Alfresco
- \* Vinyl flooring to main floor
- \* Carpet to all bedrooms and Media room
- \* Tiles to Alfresco

**Contact Us Today 1300 845 845**

Visit our Display Home at 25 Swan Rd, Pimpama Or

Contact **Trevor Pavy** on 0434 826 197 or by email

[tpavy@palladio.com.au](mailto:tpavy@palladio.com.au)