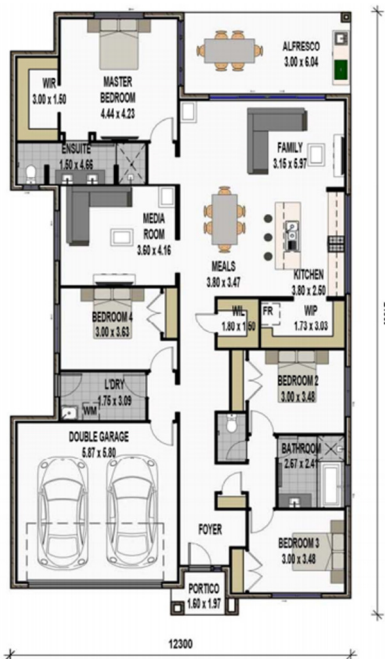


Palladio Homes

The Haven

4 Bedrooms, 2 Bathrooms, Open Plan Kitchen/Dining/Family Room, Walk-in Pantry & Linen Cupboard, Media Room & Double Garage

House & Land Package: Lot 296 Coral St, Pimpama (Pimpama Village) \$557,848.00



Inclusions (Land size 420m²)

- * Fixed price site costs up to H1 soil
- * Colourbond Roof
- * Remote control double garage door
- * Coastal façade as illustrated
- * Exposed aggregate driveway and porch (50m²)
- * European 900mm Freestanding Upright Cooker
- * European 900mm Rangehood
- * Overhead kitchen cupboards
- * Freestanding Dishwasher
- * Overhead Kitchen cupboards
- * Soft-close Kitchen Cabinets
- * Stone benchtops to Kitchen/Ensuite/Bathroom
- * Daiken 12.5 Kw Fully Ducted reverse cycle A/C
- * Ceiling Height 2590mm
- * Flyscreens to all windows
- * Ceiling fans to all bedrooms and Alfresco
- * Ceramic tile flooring to main floor
- * Carpet to all bedrooms and Media room
- * Tiles to Alfresco
- * Block out roller blinds to all windows
- ****Please Note**** Price is INCLUSIVE of \$20,000 promotional discount

Experience the *Palladio* difference

At Palladio Homes

✓ Quality Comes Standard

Contact Us Today 1300 845 845

Visit our Display Home at 25 Swan Rd,
Pimpama (Gainsborough Greens Estate) Or

Contact **Trevor Pavy** on **0434 826 197**

or by email tpavy@palladio.com.au